

RONDA mastertech 7000

XXL Multifunctions,
Retrograde and Big Date

Caliber 7003.B – 15'''



Product Specifications

Analog quartz movement	
Line	mastertech
Caliber	7003.B
Size	15'''
Version	Swiss Made
	5 Jewels / gold plated
Standard battery life	52 months
Hand fitting height	1

Features

- Repairable metal watch movement
- Very long battery life
- Power saving mechanism with pulled out stem: Reduction of consumption approximately 70%

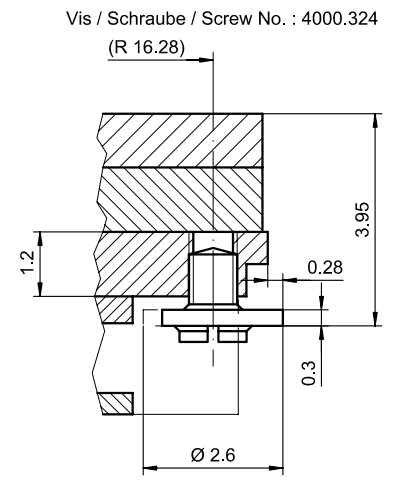
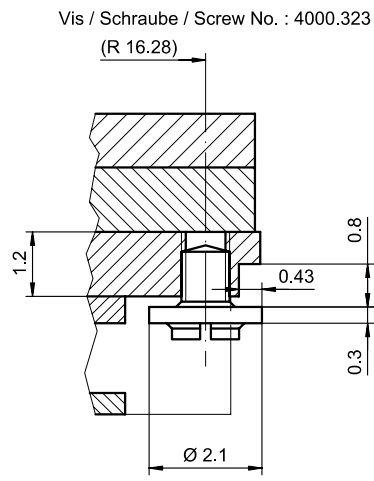
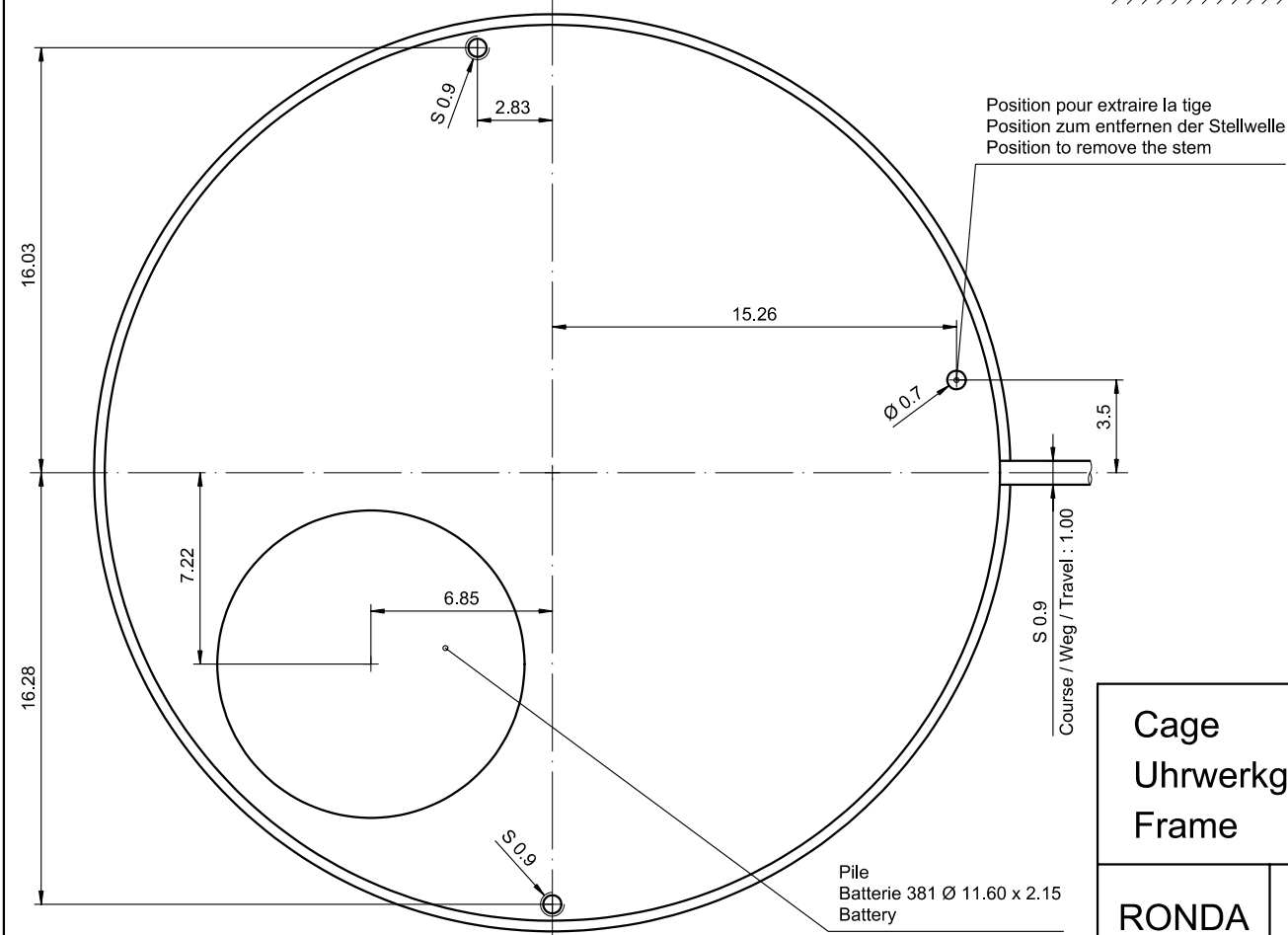
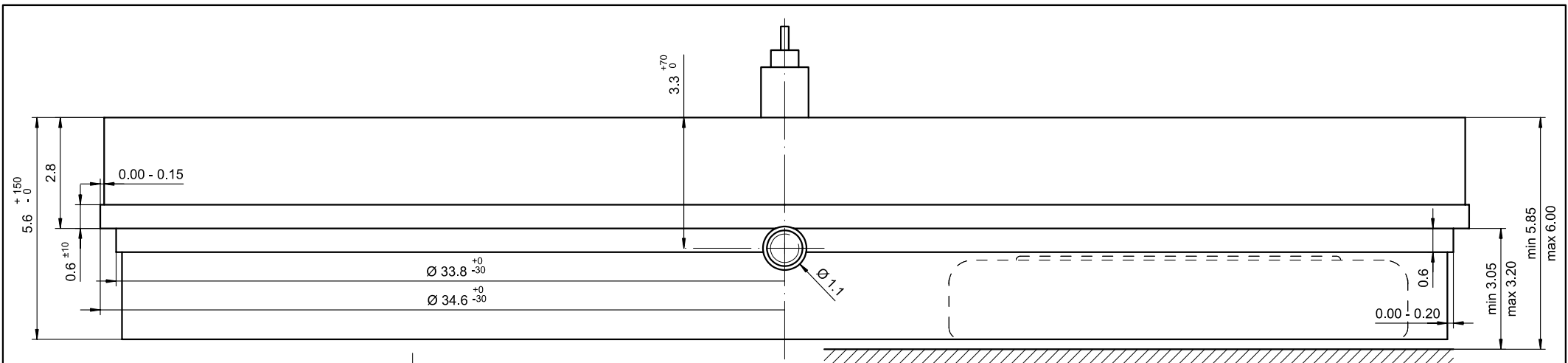
Functions

- Big date
- 3 hands

Technical Specifications

Diameter Total	34.60 mm
Case fitting	33.80 mm
Movement height	5.60 mm
Height over standard battery	5.60 mm
Movement rest	0.60 mm
Height over stem	3.30 mm
Length of stem travel	1.00 mm
Stem thread	0.90 mm
Standard battery	381
Standard battery life	52 months
Battery voltage	1.5 V
Current consumption – typical	1.32 μ A (Date Mechanism not in Gear)
Current consumption – maximum	3.1 μ A (Date Mechanism not in Gear)
Useful torque second – typical	10 μ Nm
Useful torque minute – typical	500 μ Nm
Operating temperature	0 - 50 °C
Instantaneous rate	-10/ +20 sec/month
Resistance to magnetic fields	18.8 Oe
Resistance against shock	NIHS 91-10

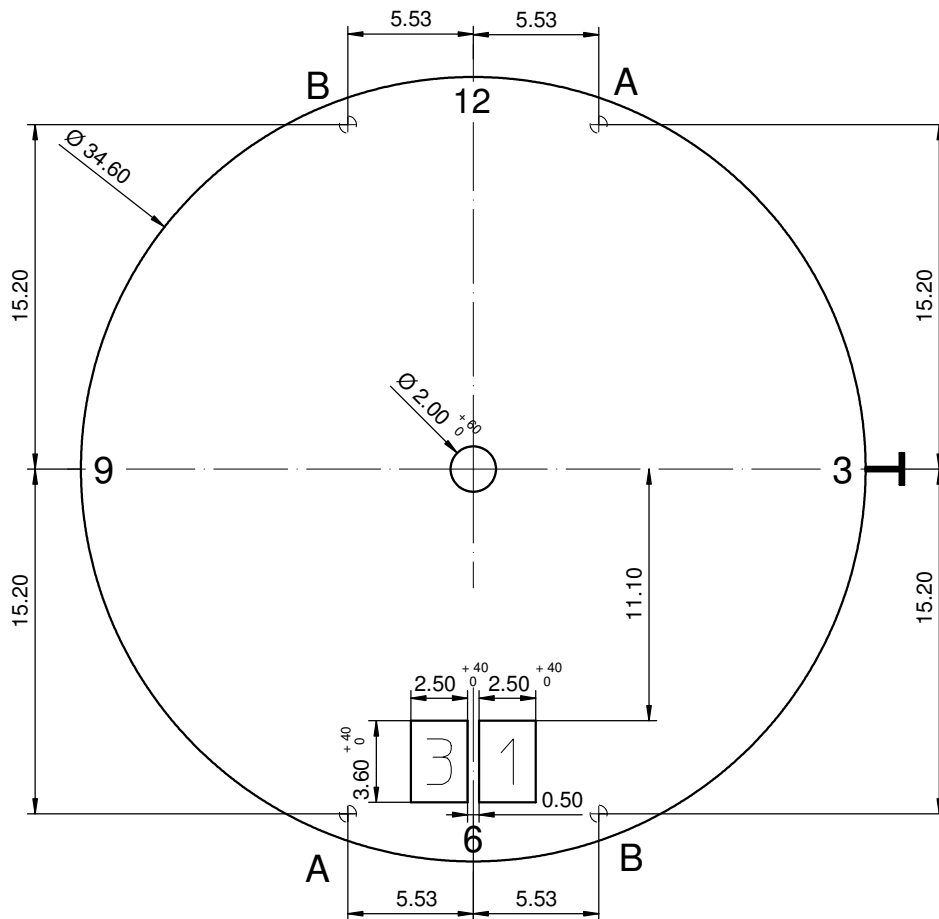




Sécurité entre l'aiguille des seconde et le verre : min 0.50 mm
 Sicherheit zwischen Sekundenzeiger und Glas : min 0.50 mm
 Security between second hand and glass : min 0.50 mm

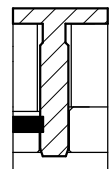
Le cadran doit être tenu par la boîte.
 Das Zifferblatt muss durch die Schale gehalten werden.
 The dial must be hold by the case.

Cage Uhrwerkgestell Frame		15'''		Issued	22 Aug 2007	dh
				Modified	08.02.2010	dh
				Released	ÄÄ 7724	
				Tolerance	+/- 20 µm	
				Scale	10 : 1 (5 : 1) (A3H)	
RONDA	7003.B	Sous réserve de modifications Änderungen vorbehalten Modifications reserved				
		No.	5000.365	01		



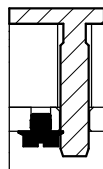
Disponibeles positions pour pieds de cadran / Available dial feet positions / Verfügbare Zifferblatfußpositionen

A Pos 1h / 7h

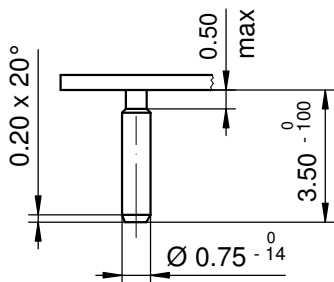


Fixation du cadran avec rondelle en plastique
Dial fixation by plastic disc
Zifferblattbefestigung durch Kunststoffscheibe

B Pos 5h / 11h



Fixation du cadran avec clef de cadran
Dial fixation by dial - key
Zifferblattbefestigung durch Zifferblattschlüssel



Epaisseur du cadran selon hauteur de l'aiguillage
Zifferblattstärke gemäss Zeigerwerkhöhen
Dial thickness according to hand fitting heights

Tige	Date
Stellw.	Datum
Stem	Date
3H	6H

Cadran
Zifferblatt
Dial

15"

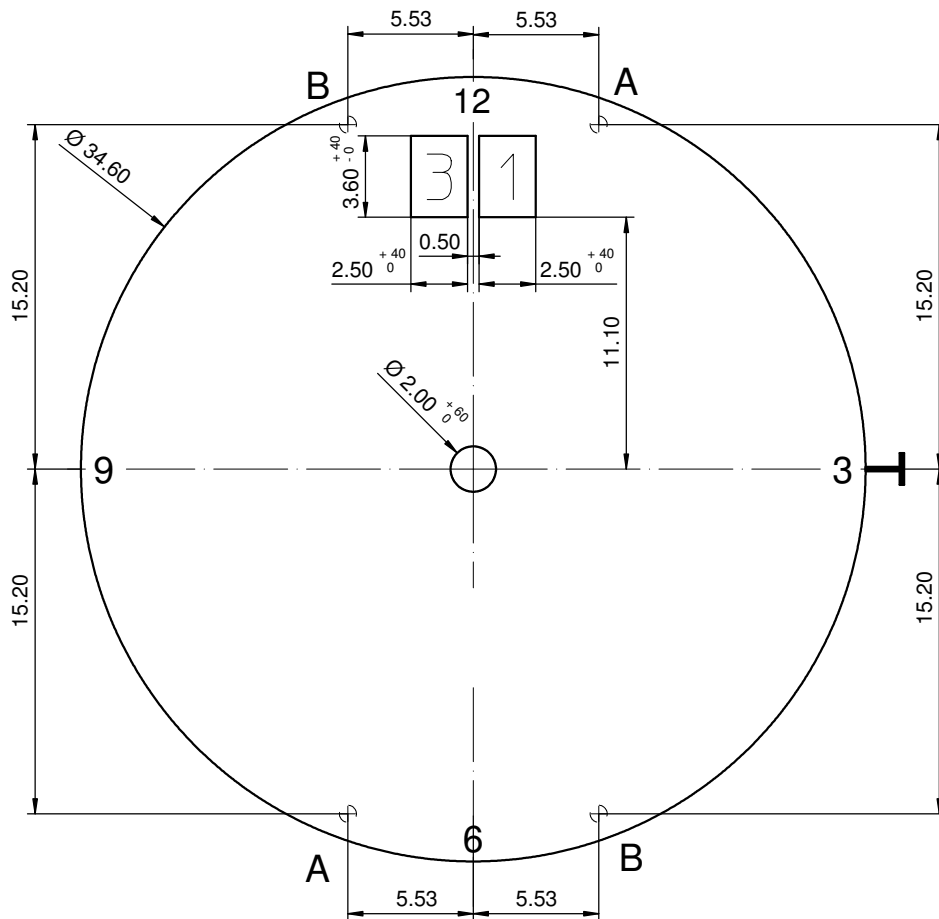
Issued	22 Aug 2007	dh
Modified	26 Nov 2012 ÄÄ 10475	dh
Released	YES	
Tolerance	+/- 20 µm	
Scale	3 : 1 (A4V)	

RONDA

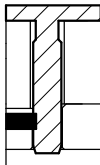
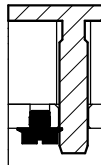
7002.B, 7003.B

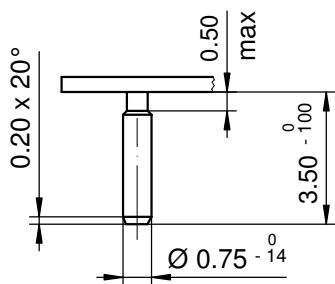
Sous réserve de modifications
Änderungsvorbehalten
Modifications reserved

No.	5010.638	01
-----	----------	----



Disponibles positions pour pieds de cadran / Available dial feet positions / Verfügbare Zifferblatfußpositionen

A Pos 1h / 7h	B Pos 5h / 11h
 <p>Fixation du cadran avec rondelle en plastique Dial fixation by plastic disc Zifferblattbefestigung durch Kunststoffscheibe</p>	 <p>Fixation du cadran avec clef de cadran Dial fixation by dial - key Zifferblattbefestigung durch Zifferblattschlüssel</p>



Epaisseur du cadran selon hauteur de l'aiguillage
Zifferblattdicke gemäss Zeigerwerkhöhen
Dial thickness according to hand fitting heights

Tige	Date
Stellw.	Datum
Stem	Date
3H	12H

Cadran
Zifferblatt
Dial

15"

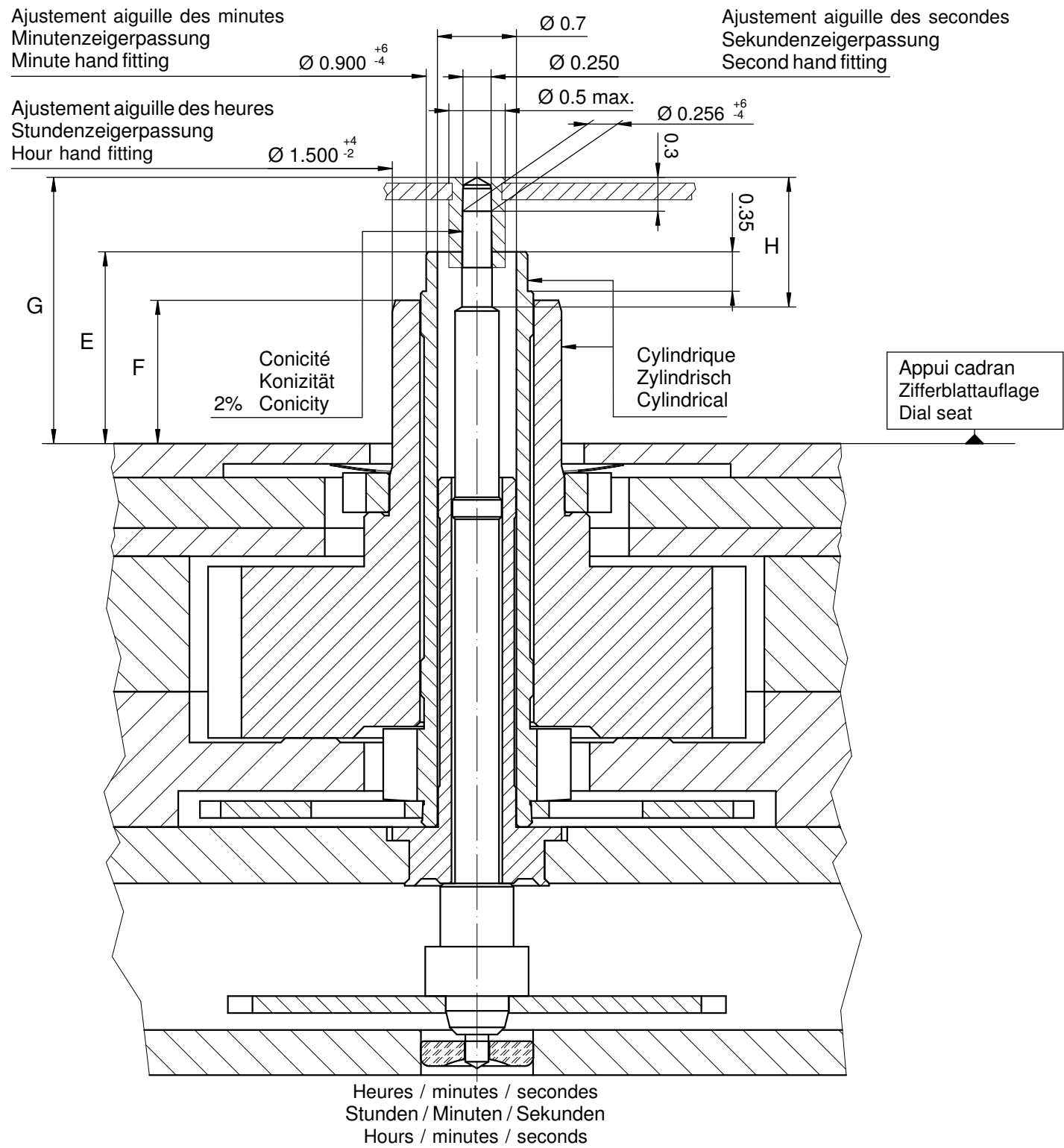
Issued	22 Aug 2007	dh
Modified	26 Nov 2012 ÄÄ 10475	dh
Released	YES	
Tolerance	+/- 20 µm	
Scale	3 : 1 (A4V)	

RONDA

7002.B, 7003.B

Sous réserve de modifications
Änderungsvorbehalten
Modifications reserved

No.	5010.637	01
-----	----------	----



Aiguillages Zeigerwerkhöhe Hand fitting height				
Dépassement Höhe über Zifferblattauflage Height over dial seat				
No	Pignon des secondes Sekundentrieb Second pinion	Chaussee Minutenrohr Cannon-pinion	Roue des heures Stundenrad Hour wheel	
1	G	E	F	H
-				

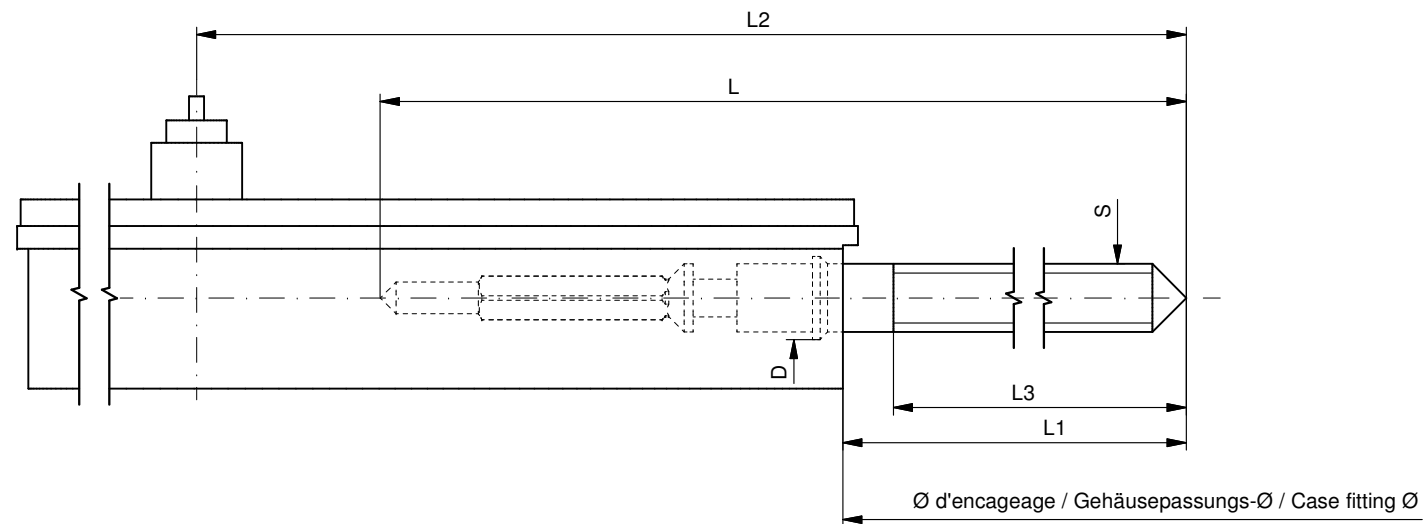
Aiguillages Zeigerwerkhöhe Hand fitting height				
Peinture comprise / inkl. Farbe / Paint included				
Epaisseur maximum du cadran Maximale Zifferblattdicke Maximum dial thickness				
No	Sous l'aiguille des secondes Unter Sekundenzeiger Under second hand	Sous l'aiguille des minutes Unter Minutenzeiger Under minute hand	Sous l'aiguille des heures Unter Stundenzeiger Under hour hand	Epaisseur des aiguilles Zeigerdicke Hands thickness
1	1.85	1.30	0.85	0.15
-				

	Aig. des secondes Sekundenzeiger Second hand	Aig. des minutes Minutenzeiger Minute hand	Aig. des heures Stundenzeiger Hour hand	Lors de la pose d'aiguilles, le mouvement doit être soutenu. Beim Zeigersetzen muss das Werk abgestützt werden. The movement needs to be supported for hand setting.
mg max.	10	30	30	Masse / Masse / Weight *
µNm max.	0.08	0.70	0.70	Balourd / Unwucht / Unbalance *
gmm ² max.	0.6	-	-	Inertie / Massenträgheit / Inertia *
N max.	30	40	40	Force de chassage / Aufpresskraft / Force

Sous réserve de toutes modifications / Änderungen vorbehalten / All modifications reserved

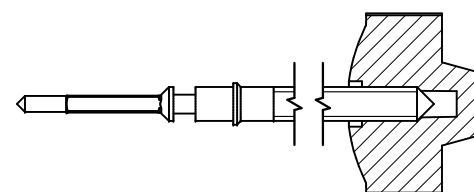
15''	Issued	22 Aug 2007	dh
	Modified	27.10.2011 ÄA 11646	dh
	Released	YES	
	Tolerance	µm	
	Scale	20:1 (A3H)	
	Sous réserve de modifications / Änderungen vorbehalten / Modifications reserved		
RONDA	7003.B	No. 3316.118	03

* En cas de données différentes, veuillez contacter le service après-vente / * Bei abweichenden Werten, bitte technischen Kundendienst anfragen / * In case of different values, please contact the customer service



Tige de travail (intégrée dans le mouvement)
 Arbeitstellwelle (im Werk eingebaut)
 Working stem (implemented in the movement)

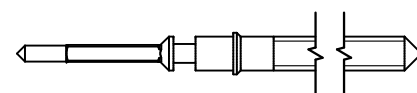
No. d'article Artikelnummer Part number	L	L1	L2	L3	S	D
3000.194.CO	21.30	10.74	27.64	10.15	0.90	1.10



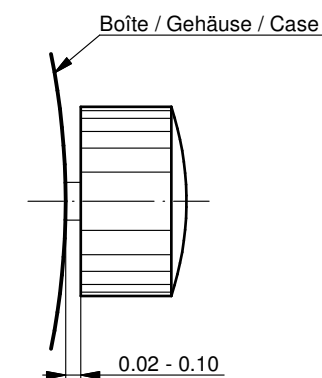
Couleur de la couronne Kronenfarbe Crown color	purple violett violet
Code	UN 5046

Tige (normale) / Stellwelle (normal) / Stem (normal)

No. d'article Artikelnummer Part number	L	L1	L2	L3	S	D
3000.194	21.30	10.74	27.64	10.15	0.90	1.10



Couronne normale
 Normale Krone
 Normal crown

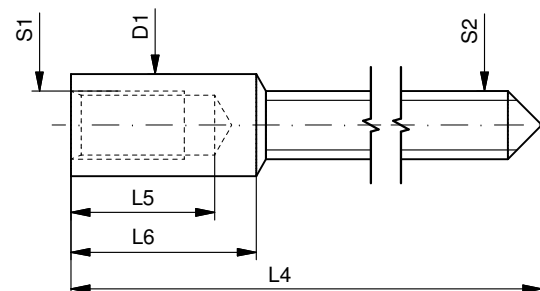


Couronne vissée
 Geschraubte Krone
 Screwed crown

Force ⇐ min. Kraft ⇐ min. Force ⇐ min.	10 N
Force ⇐ max. Kraft ⇐ max. Force ⇐ max.	15 N

Rallonge de tige / Stellwelle Verlängerung / Stem extension

No. d'article Artikelnummer Part number	L4	L5 (min)	L6	S1	S2	D1
3000.040	12.00	1.90	2.45	0.90	0.90	1.35



Tige (dimensions / forces)
 Stellwelle (Dimensionen / Kräfte)
 Stem (dimensions / forces)


RONDA

7003.B, 7003.L, 7003.N,
 7004.B, 7004.N, 7004.P

Issued	06 Sep 2012	ds5222
Modified	---	ds5222
Released	ÄA 11741	
Tolerance	YES	
Scale	10:1 (A3)	

Sous réserve de modifications
 Änderungen vorbehalten
 Modifications reserved

No.	5030.022	00
-----	----------	----

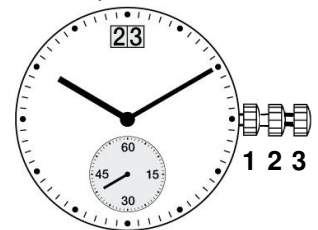
	Casing information T2	Dokument DOMVT092e	Seite 1 / 1
	RONDA mastertech 7002.B, 7003.B, 7004.B	Änd.Datum 26.02.2009	Änd.Stand 01

→ RTC, RHK, RTH, ERMANO, Pine Precision, Time & Time, 5250

Information & references

- Case → case drawings
- Dial, date window and day indicator → dial drawings
- Hand fitting heights & specifications for hands → hand fitting height drawings

Example: 7004.B



Hand setting procedure

- **Stem position 2** (quick mode): The date must be set to **02** by turning the crown anti clockwise.
- **Stem position 3**: Turn the crown clockwise until the date changes from **02** to **03**.
- Set the hands to 12.00 h

Calendar changing phases

1½ - 2 hours

Casing tool 7000-7999 A2 (part nr. H 7xxx.1A2)

For Hand setting



Hand setting

Maximal force:

Hour and minute hands: max. 40N

All other hands: max. 30N

The movement needs to be supported for hand setting.

Casing tool 7000-7999 T (part nr. H 7xxx.1T)

For removal of stem



Stem removal


For removal of the stem, the stem must be pushed into position **1** (pressed in) prior to apply pressure to the setting lever.

Remark: During the date setting with quick mode (stem position **2**), the speed may not exceed 5 days/second.

Information re. BIG DATE

An extreme acceleration in setting the date with quick mode can induce a false date indication. The synchronization is re-established by setting the date from 01 till 31 (stem in Pos. **2**).


erstellt, bzw. geändert und geprüft		überprüft und freigegeben	
Datum: 10.04.2008	Visum/Initialen:	Datum: 10.04.2008	Visum/Initialen:

	Werkhalter T2 Porte-pièce T2 Movement holder T2	DOMVT004
		Version: 2.1
	Verwendung & Übersicht Utilisation & Vue d'ensemble Utilisation & Overview	Prozess: 3.1.3
		Änd.-Dat.: 20.04.15

→ 5110, 5112, 5150, 5151, 5152, 5160, 5161, 5163, 5164, 5166, 5310, 5311, 5312, RTC, RHK

→ Ermano, Pine Precision

→ AF Switzerland SA, Horotec SA, Tschudin & Schneider

	A Zeiger setzen Poser les aiguilles Hand setting	T Stellwelle entfernen Enlever la tige Stem removal	Diverses Divers Various
Kalibergruppe Groupe de calibre Calibre group	Artikelnummer Numéro d'article Part number	Artikelnummer Numéro d'article Part number	Artikelnummer Numéro d'article Part number
ZXX Z50	H ZXX.2A 	H ZXX.1T 	
ZXX Z60	H ZXX.1A 	H ZXX.1T 	
8000-8499 8040.B 8040.N	H 80XX.1A 	H 80XX.1T 	

Wichtig! Die Höhe der Abstützschrauben muss vor Beginn jeder Serie eingestellt werden.

Important! Veuillez ajuster l'hauteur des vis de support au préalable de chaque série.

Important! Adjust height of support screws prior to each series.

7000-7999

700X.B
700X.L
700X.N
700X.P

H 7XXX.1A






H 7XXX.1T



Wichtig! Die Höhe der Abstützschrauben muss vor Beginn jeder Serie eingestellt werden.
Important! Veuillez ajuster l'hauteur des vis de support au préalable de chaque série.
Important! Adjust height of support screws prior to each series.

	A Zeiger setzen Poser les aiguilles Hand setting	T Stellwelle entfernen Enlever la tige Stem removal	P Alarm-Check Contrôle d'alarme Alarm check
Kalibergruppe Groupe de calibre Calibre group	Artikelnummer Numéro d'article Part number	Artikelnummer Numéro d'article Part number	Artikelnummer Numéro d'article Part number

6000-6999
6XXX.B 6XXX.D

H 6XXX.1A	
	
Swiss Made	Swiss Parts
	

H 6XXX.1T


4000-5999.B/.C/.D/.E
4XXX.B 5XXX.B 5XXX.C 5XXX.D 5XXX.E

H 5XXX.1A


H 5XXX.1T


H 5XXX.1P


4000-5999.F
5XXX.F (4XXX.B) (5XXX.B) (5XXX.C) (5XXX.D) (5XXX.E)

H 5XXX.FA


H 5XXX.1T


H 5XXX.1P


Wichtig! Die Höhe der Abstützschrauben muss vor Beginn jeder Serie eingestellt werden.
Important! Veuillez ajuster l'hauteur des vis de support au préalable de chaque série.
Important! Adjust height of support screws prior to each series.

	A Zeiger setzen Poser les aiguilles Hand setting	T Stellwelle entfernen Enlever la tige Stem removal	Diverses Divers Various
Kalibergruppe Groupe de calibre Calibre group	Artikelnummer Numéro d'article Part number	Artikelnummer Numéro d'article Part number	Artikelnummer Numéro d'article Part number

3500-3999
3520.D 3540.D



1062-1069
1062 1063 1064 1069
1062
1063
1064
1069

H 106X.1A

Swiss Made		Swiss Parts	
	6h		6h
-	-	-	-
	-		-
-		-	
-	-	-	-



1042
1042






Wichtig! Die Höhe der Abstützschrauben muss vor Beginn jeder Serie eingestellt werden.
Important! Veuillez ajuster l'hauteur des vis de support au préalable de chaque série.
Important! Adjust height of support screws prior to each series.

	A Zeiger setzen Poser les aiguilles Hand setting	T Stellwelle entfernen Enlever la tige Stem removal	Diverses Divers Various
Kalibergruppe Groupe de calibre Calibre group	Artikelnummer Numéro d'article Part number	Artikelnummer Numéro d'article Part number	Artikelnummer Numéro d'article Part number
1032 1032	H 1032.1A 	H 1032.1T 	
1012-1019 1012 1013 1014 1015 1016 1019	H 101X.1A 	H 101X.1T 	
1002-1009 1002 1003 1004 1005 1006 1009	H 100X.1A 	H 100X.1T 	

Wichtig! Die Höhe der Abstützschrauben muss vor Beginn jeder Serie eingestellt werden.
Important! Veuillez ajuster l'hauteur des vis de support au préalable de chaque série.
Important! Adjust height of support screws prior to each series.




	A Zeiger setzen Poser les aiguilles Hand setting	T Stellwelle entfernen Enlever la tige Stem removal	Diverses Divers Various
Kalibergruppe Groupe de calibre Calibre group	Artikelnummer Numéro d'article Part number	Artikelnummer Numéro d'article Part number	Artikelnummer Numéro d'article Part number

782-788
782 783 784 785 788

H 78X.1A	
	
Swiss Made	Swiss Parts
	

H 78X.1T


772-775
772 773 774 775





H 77X.1A	
	
Swiss Made	Swiss Parts
	

H 77X.1T


Wichtig! Die Höhe der Abstützschrauben muss vor Beginn jeder Serie eingestellt werden.
Important! Veuillez ajuster l'hauteur des vis de support au préalable de chaque série.
Important! Adjust height of support screws prior to each series.


	A Zeiger setzen Poser les aiguilles Hand setting	T Stellwelle entfernen Enlever la tige Stem removal	Diverses Divers Various
Kalibergruppe Groupe de calibre Calibre group	Artikelnummer Numéro d'article Part number	Artikelnummer Numéro d'article Part number	Artikelnummer Numéro d'article Part number

762-763
762 762E 763 763E
762 762E 763 763E

H 76X.1A	
	
Swiss Made	Swiss Parts
-	-
-	-
	-
	



751-753
751 753
751 753




H 75X.1A	
	
Swiss Made	Swiss Parts
-	-
	



Wichtig! Die Höhe der Abstützschrauben muss vor Beginn jeder Serie eingestellt werden.
Important! Veuillez ajuster l'hauteur des vis de support au préalable de chaque série.
Important! Adjust height of support screws prior to each series.


	A Zeiger setzen Poser les aiguilles Hand setting	T Stellwelle entfernen Enlever la tige Stem removal	Diverses Divers Various
Kalibergruppe Groupe de calibre Calibre group	Artikelnummer Numéro d'article Part number	Artikelnummer Numéro d'article Part number	Artikelnummer Numéro d'article Part number

712-715
712 713 714 715

H 71X.1A	
	
Swiss Made	Swiss Parts
	

H 71X.1T


702-708
702 703 704 705 708 (706)

H 70X.1A	
	
Swiss Made	Swiss Parts
	







H 70X.1T


706
706.1 706.2 706.3 706.B

H 706.1A	
	
Swiss Made	Swiss Parts
 6h	 6h
	

H 70X.1T


Wichtig! Die Höhe der Abstützschrauben muss vor Beginn jeder Serie eingestellt werden.
Important! Veuillez ajuster l'hauteur des vis de support au préalable de chaque série.
Important! Adjust height of support screws prior to each series.

	A Zeiger setzen Poser les aiguilles Hand setting	T Stellwelle entfernen Enlever la tige Stem removal	Diverses Divers Various
Kalibergruppe Groupe de calibre Calibre group	Artikelnummer Numéro d'article Part number	Artikelnummer Numéro d'article Part number	Artikelnummer Numéro d'article Part number
582-585 582 583 585	H 58X.1A 	H 58X.1T 	
512-519 512 513 515 517 519	H 51X.1A 	H 51X.1T 	
502-509 502 503 505 507 509	H 50X.1A 	H 50X.1T 	

Wichtig! Die Höhe der Abstützschrauben muss vor Beginn jeder Serie eingestellt werden.
Important! Veuillez ajuster l'hauteur des vis de support au préalable de chaque série.
Important! Adjust height of support screws prior to each series.

User's Manual English

Movements Caliber

RONDA powertech

– 585
– 505
– 515

RONDA slimtech

– 1005
– 1006
– 1009
– 1015
– 1016
– 1019

RONDA normtech

– 774 – 6003.D
– 775 – 6004.D
– 704 – 6003.B
– 705 – 6004.B
– 784
– 785
– 714
– 715
– 715Li

RONDA mastertech

– 7002.B
– 7003.B
– 7004.B

You have decided to buy a watch, which was assembled by a watchmaker using a Ronda movement. Please note that no watches are produced or distributed under the Ronda brand.

In case of repairs, guarantee claims and questions concerning the functioning of a watch, purchasers and consumers should contact their retailer or the watch manufacturer, for which the relevant information can be found in the sales or guarantee documentation provided with the watch.

Cal. 585 / 785:

Battery type: 362/SR721SW (Ø 7.9 mm x 2.1 mm)

Cal. 774 / 775 / 784:

Battery type: 364/SR621SW (Ø 6.8 mm x 2.1 mm)

Cal. 505 / 515 / 704 / 705 / 714 / 715:

Battery type: 371/SR920SW (Ø 9.5 mm x 2.05 mm)

Cal. 6003.D / 6004.D / 6003.B / 6004.B:

Battery type: 373/SR916SW (Ø 9.5 mm x 1.6 mm)

Cal. 1005 / 1006 / 1009 / 1015 / 1016 / 1019:

Battery type: 341/SR714SW (Ø 7.9 mm x 1.4 mm)

Cal. 7002.B / 7003.B / 7004.B:

Battery type: 381/SR1120SW (Ø 11.6 mm x 2.05 mm)

Cal. 715Li:

Battery type: CR 2016 (Ø 20 mm x 1.6 mm)

Precision: +20/-10 seconds per month

Cal. 585

Cal. 6003.D

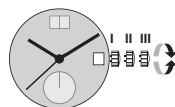
Cal. 505

Cal. 6004.D

Cal. 515

Cal. 6003.B

Cal. 6004.B



Pos. I Position of rest (watch running)

Pos. II Quick-change correction for date

The date can also be corrected during the day-changing phase between 10 pm and midnight. The date of the following day has to be set, because no automatic date change takes place at midnight.

- Pull the crown out to position II (watch still running).
- Turn the crown clockwise until the required date appears.

Cal. 6003.D & 6004.D:

- Turn the crown until the required date appears.
- Push the crown back into position I.

Pos. III Setting the time

- Pull the crown out to position III (watch stopped).
- Turn the crown, until the current time is displayed (remember the 24-hour cycle).
- Push the crown back into position I.

Cal. 774

Cal. 715Li

Cal. 775

Cal. 704

Cal. 1005

Cal. 705

Cal. 1006

Cal. 784

Cal. 1009

Cal. 785

Cal. 1015

Cal. 714

Cal. 1016

Cal. 715

Cal. 1019



Pos. I Position of rest (watch running)

Pos. II Quick-change correction for date

Blocking time for the quick-change day correction is from approx. 9.30 pm and midnight.

- Pull the crown out to position II (watch still running).
- Turn the crown until the current date appears.
- Push the crown back into position I.

Pos. III Setting the time

- Pull the crown out to position III (watch stopped).
- Turn the crown, until the current time is displayed (remember the 24-hour cycle).
- Push the crown back into position I.

Cal. 7002.B

Cal. 7003.B

Cal. 7004.B



Pos. I Position of rest (watch running)

Pos. II Quick-change correction for date

The date can also be changed during the day-changing phase between approx. 8.00 pm and midnight.

The date of the following day has to be set, because no automatic date change takes place at midnight.

- Pull the crown out to position II (watch still running).
- Turn the crown until the current date appears.
- Push the crown back into position I.

Pos. III Setting the time

- Pull the crown out to position III (watch stopped).
- Turn the crown, until the current time is displayed (remember the 24-hour cycle).
- Push the crown back into position I.